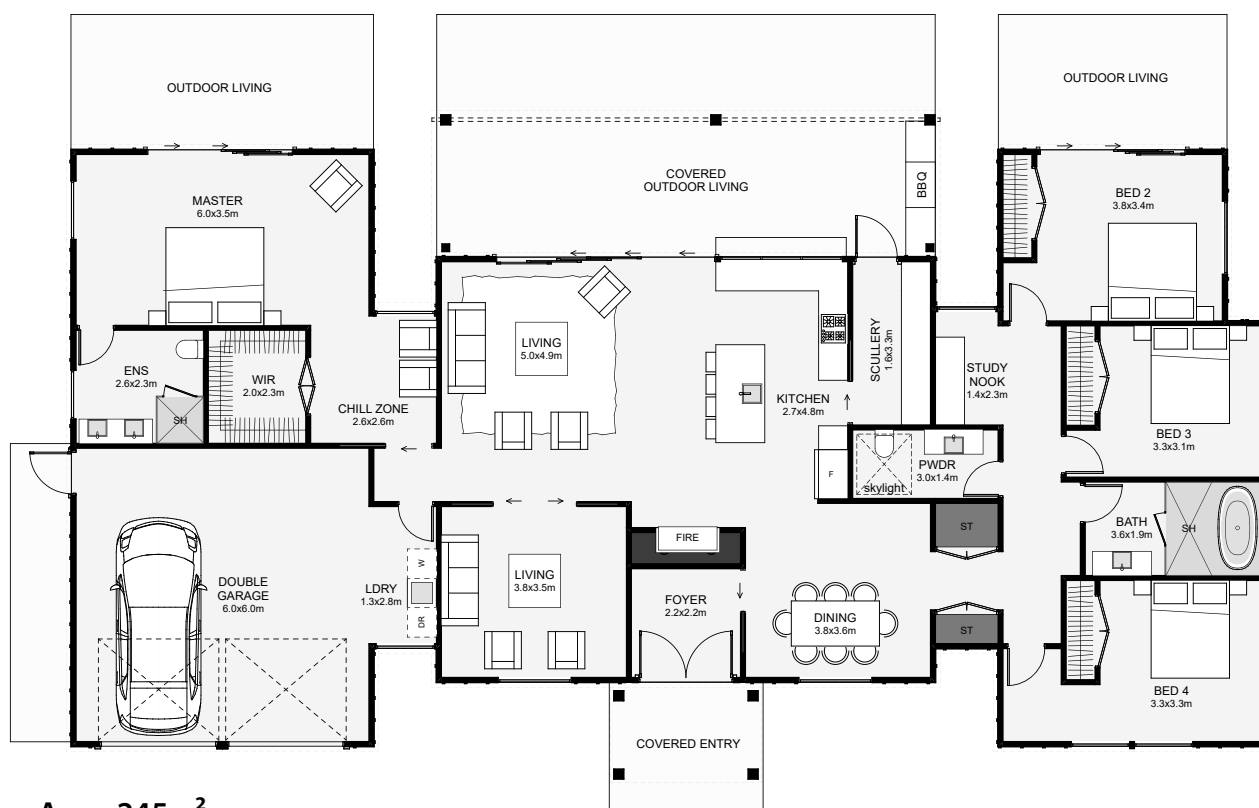




This architectural farmhouse includes classic styling and symmetrical elements that will look sharp on any lifestyle property. Inside the floorplan layout is made up of two living spaces, a central fireplace, a large scullery, a separate master and an optional outdoor bar with a covered outdoor living space. If you want to make a statement on your lifestyle block, one that doesn't get old with time and one you can call home, this is it!



Floor Area: 245m²

2
 4
 2
 2
 24.4m
 12.1m

Contact us:

Ph: 027 310 6553

E: fitzbuildltd@gmail.com

www.fitzbuild.co.nz